

Six Easy Steps to Belt Repair

Step 1: Cleaning surface



Prepare the damaged conveyor belt surface by removing loose rubber and grinding the surface. We recommend the Rubber Terminator drill mounted disk. Ensure the surface cleaned, roughened and free of dust, oil, grease and moisture. Only use solvent to clean Asphalt, coal or oil stained belts.

Step 2: Opening repair kit



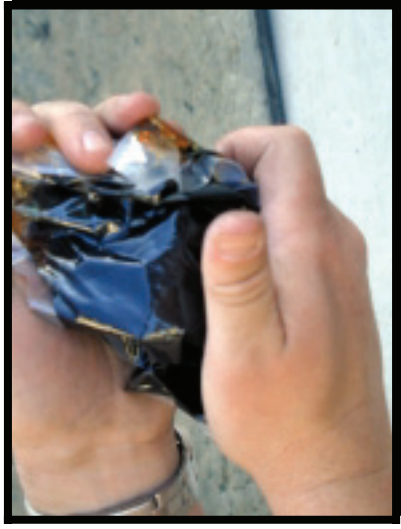
Feel the aluminum foil for the clip separator inside. Cut the foil along the edge to the outside of the separator clip.

Step 3: Removing divider spine



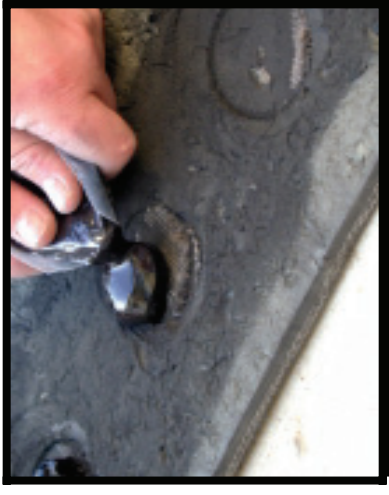
Remove the resin pouch and lay flat. Grasping the pouch on either end, gently pull the two sides apart until the separator tube pops up. Pull the tube out moving from top to bottom.

Step 4: Mixing hardener and epoxy



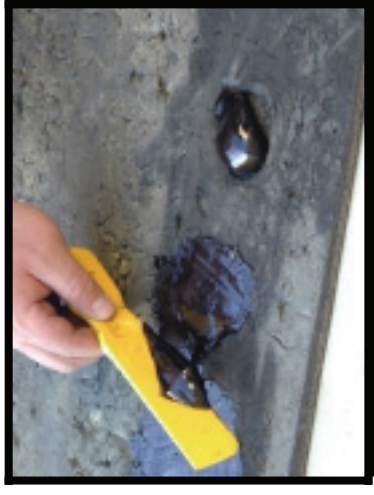
Mix the hardener and resin together for approximately 2-4 minutes by working the bag in your hands. The resin will start to warm up after 2-3 minutes of mixing. In winter mix for 4-5 minutes.

Step 5: Applying resin



Cut an opening in the bag that suits the repair you are doing. For small spot repairs only cut a small hole in a corner. For larger repairs cut a bigger hole. Apply the resin to the damaged area by squeezing it out of the bag.

Step 6: Spreading resin



Work the Eli-Flex into the surface using a spatula or any other flat-edged tool. Working time is approximately 20-30 minutes. After approximately 45 minutes the resin will gel, and after 120 min it will set. It is now ready for belt operation, but will take 8-10 hrs to reach full strength.